

The National Science Foundation IGERT Program

GEEMaP is funded by the National Science Foundation's Integrative Graduate Education and Research Traineeship (IGERT) initiative. The stated purpose of the IGERT program is "to meet the challenges of educating U.S. Ph.D. scientists, engineers, and educators with the interdisciplinary backgrounds, deep knowledge in chosen disciplines, and technical, professional, and personal skills to become in their own careers the leaders and creative agents for change."

-All NSF Directorates – from Computer and Information Science and Engineering to Polar Programs – are involved in IGERT.

-The IGERT initiative began in 1997.

-There now are over 120 funded IGERT programs at universities throughout the country.

-GEEMaP is the first IGERT program at The University of Iowa.



Questions?

Contact Carol Ives, Program Assistant
319.335.5710 or carol-ives@uiowa.edu



GEEMaP Faculty Principal Investigators

Kate Cowles, Statistics
kate-cowles@uiowa.edu

David Bennett, Geography
david-bennett@uiowa.edu

Andrew Kusiak, Industrial Engineering
andrew-kusiak@uiowa.edu

Alberto Segre, Computer Science
alberto-segre@uiowa.edu

Kathleen Stewart, Geography
kathleen-stewart@uiowa.edu

GEEMaP unites 18 faculty members from seven departments in three colleges, combining expertise in wind energy, water resources, flood control, geographic information science, spatial statistics, computer science, and more.



GEEMaP

The University of Iowa
3087 Main Library
Iowa City, IA 52244

Phone: 319.335.5710

Fax: 319.335.5374

e-mail: GEEMaP@uiowa.edu
Website: geemap.stat.uiowa.edu



THE UNIVERSITY OF IOWA



GEEMaP

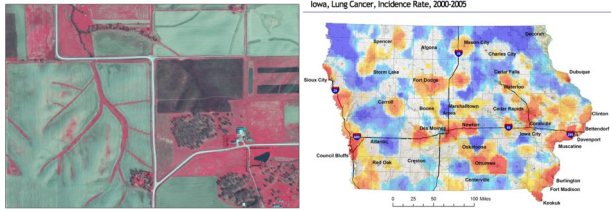
A Graduate Program in:

**Geoinformatics for
Environmental and Energy
Modeling and Prediction**



National Science
Foundation

What is Geoinformatics?



Geoinformatics is the science of measuring, storing, managing, analyzing, and visualizing phenomena occurring on or near the earth's surface. It includes geographic information science, spatial statistics, and high-performance computing.

The **GEEMaP program** will equip Ph.D. students with not only technical know-how, scientific understanding and hands-on experience but also communication skills and intercultural perspectives.



While earning Ph.D.s from their own departments, GEEMaP students will broaden and deepen their knowledge through shared activities:

- Additional coursework leading to the Graduate Certificate in Geoinformatics
- Participation in a special interdisciplinary Geoinformatics seminar
- Participation in interdisciplinary research groups led by GEEMaP faculty
- Involvement in internships with industry and government agencies
- Participation in the annual GEEMaP research and technology workshop
- Involvement in community-building activities with quantitative science and engineering students and faculty campus-wide

— HOW TO APPLY —

FIRST:

⇒ Apply for admission directly to the department from which you wish to receive your Ph.D. Participating departments are:

- Biostatistics**
- Civil & Environmental Engineering**
- Computer Science**
- Geography**
- Geoinformatics ***
- Industrial Engineering**
- Statistics**

*New program—check for status

Make certain to observe all of the individual department's application requirements and deadlines.

⇒ Inform the department that you are also applying to the GEEMaP IGERT.

NEXT:

⇒ Apply for admission to GEEMaP by completing & forwarding the following:

- GEEMaP application (found on our website @geemap.stat.uiowa.edu)
- Statement of purpose, and
- Three letters of reference (must be sent directly by the writer).

Email your application and supporting documents to GEEMaP@uiowa.edu

— DEADLINES —

- **Trainee Applications for GEEMaP**
Due January 15 prior to fall enrollment
- **Associate Applications for GEEMaP**
Due August 15 prior to fall enrollment



Eligibility

	Eligibility	Funding
GEEMaP trainees	U.S. citizens and permanent residents only	For first 2 years of graduate study: NSF stipend of \$30,000/year plus paid tuition and fees Eligible for departmental, university, and grant funding thereafter
GEEMaP associates	No citizenship requirements	May apply for departmental, university, and grant funding

Eligibility Requirements for all GEEMaP trainees and associates include:

⇒ U.S. bachelor's degree from a regionally accredited American college or university, or an equivalent degree from another country as determined by the Office of Admissions

⇒ A passionate interest in environmental and energy-related issues as well as in cutting-edge computational methods

Women and underrepresented minorities are encouraged to apply to the GEEMaP program.